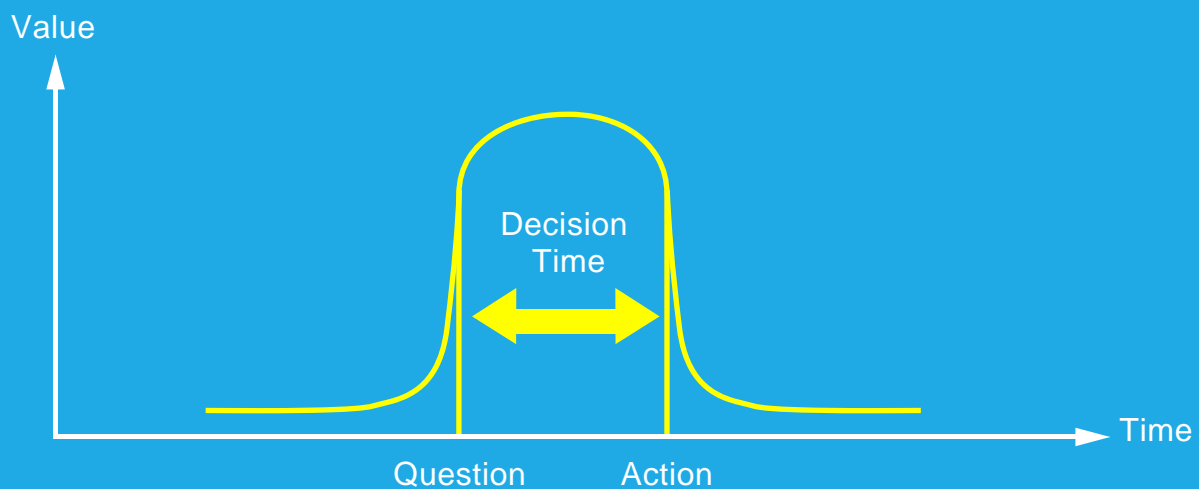


# Product Intelligence



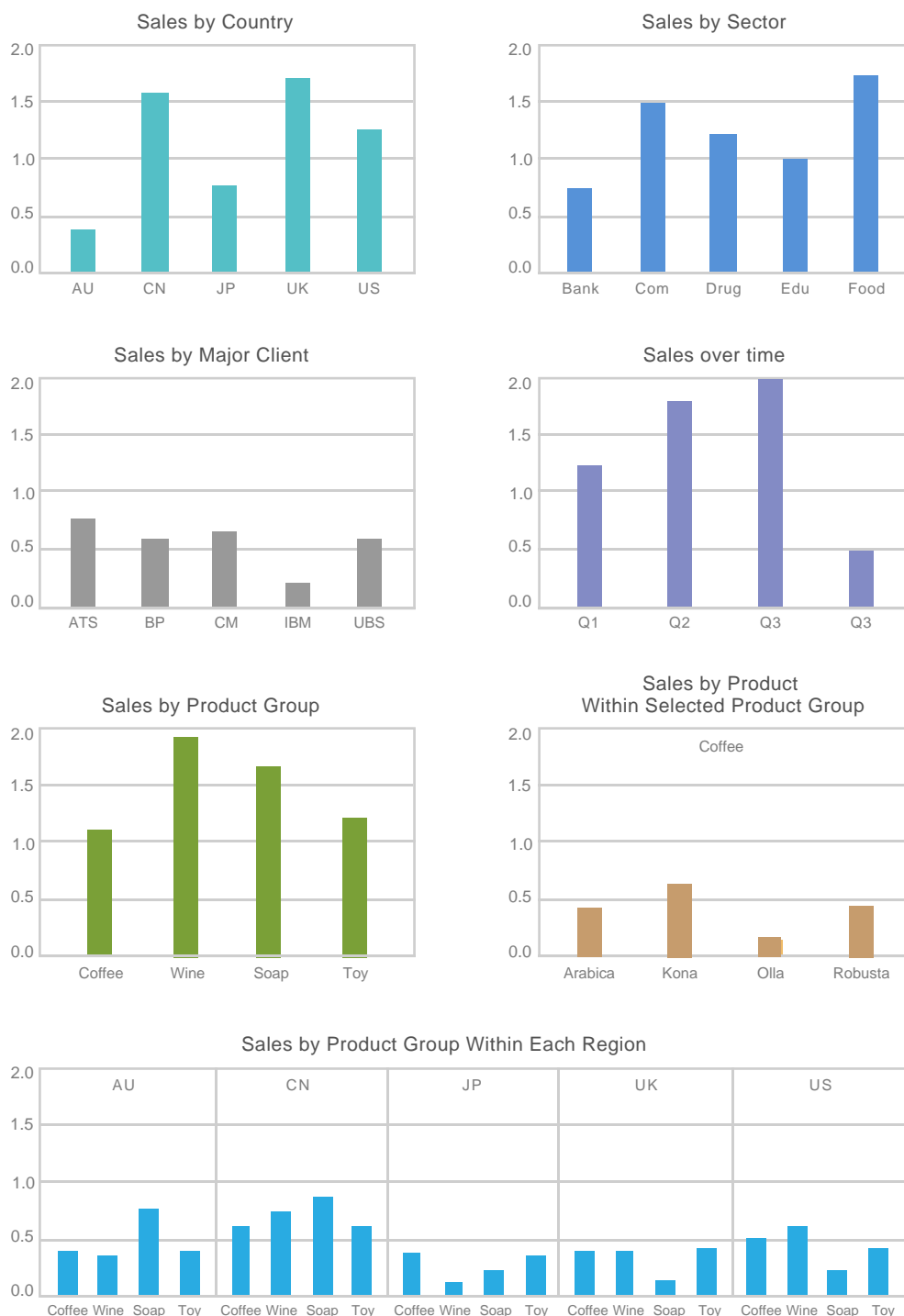
In our fast changing economy that places a premium on flexibility and speed of execution, it is critical to increase the decision-making efficiency and effectiveness. The time in between a question and the action needs to be reduced.

The power of 8Manage product performance analysis functions coming from its centralized Product-Client-Sales-Support information model over a single database or data warehouse. It massively decreases the time it takes to gather information and allows people to focus on analyzing alternatives and weighing pros and cons. This allows business managers to spend time working on what adds the most value instead of dealing with missing and consistent data.

All the information screens in the examples below can be set up as real-time displays on the user's dashboards and the user can observe the information update in **real-time (zero delay)**.

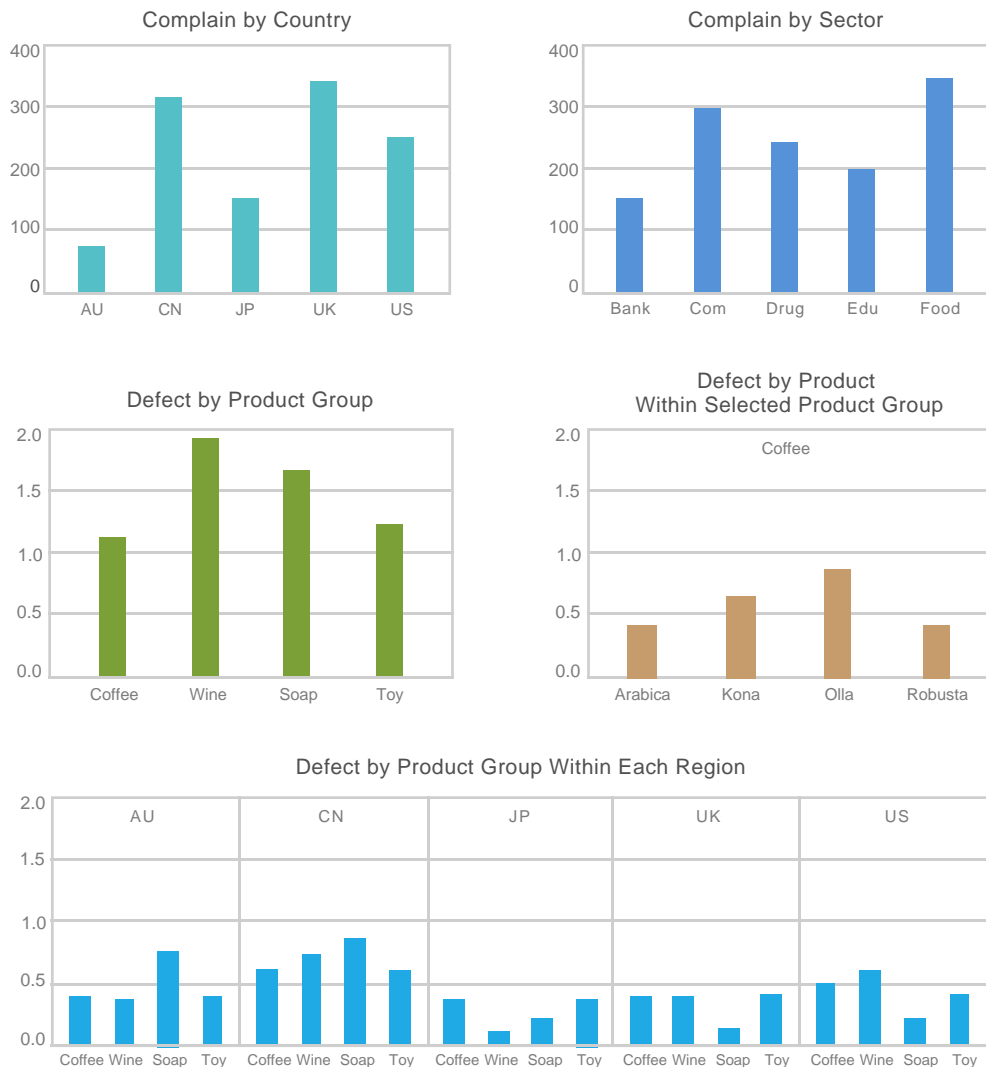
# 1. Product Sales By Region, Industry and Client

8Manage provides product sales information to the user in real-time. The sales performance information can be displayed by region, industry or client. The user is allowed to click on the information bar of each screen to drill down to see the further breakdown information. For example, the user can click on the US information bar of the Sales by Country screen and request to view the further breakdown information by product group or the user can click on the Coffee information bar on the Sales by Product Group screen and request to view the further breakdown information by coffee product.



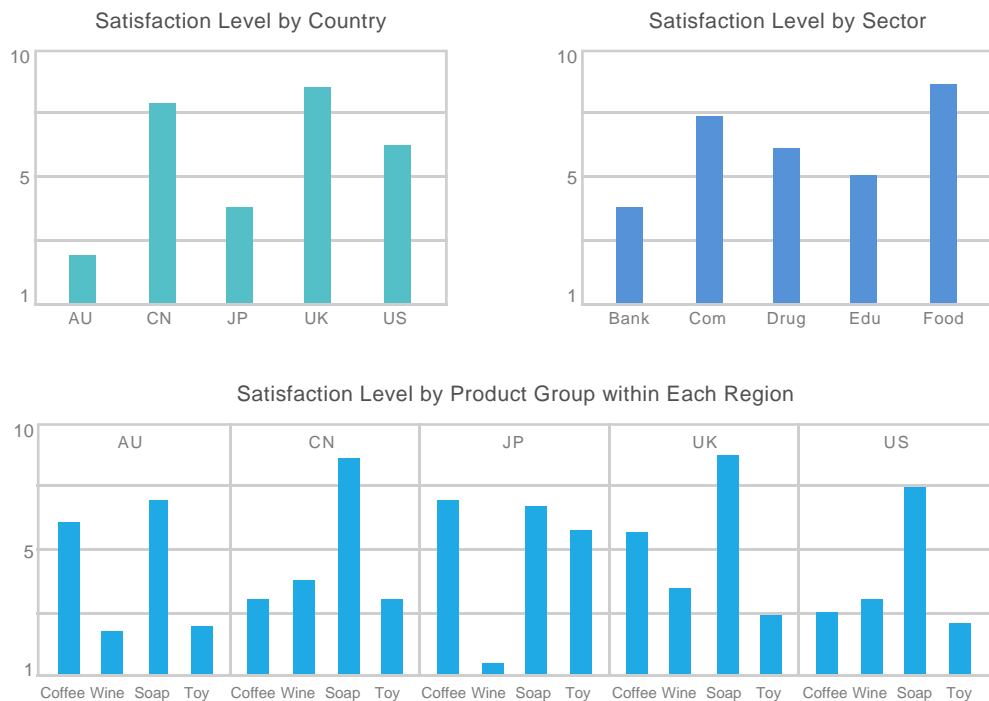
## 2. Complain or Defect By Region, Industry and Client

8Manage can analyze source of complains and provide client complain and product defect information by country, industry , client , product and product group. The user is allowed to click on the information bar of each screen to drill down to request to view the further breakdown information. For example, the user can click on the Coffee information bar on the Defect by Product Group screen and request to view the further breakdown information by coffee product.



### 3. Satisfaction Level By Region, Industry and Client

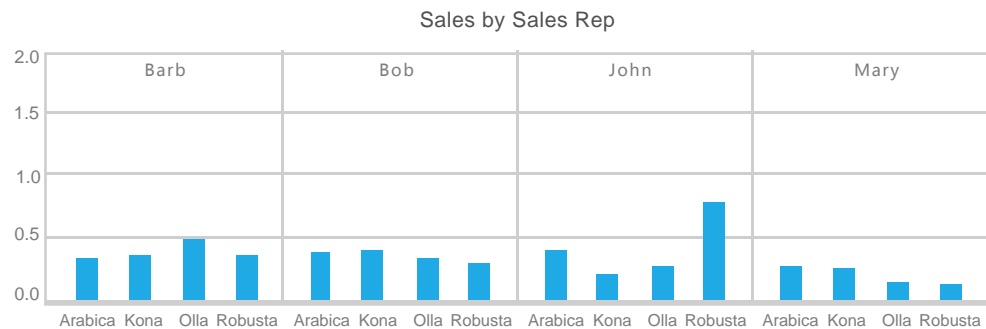
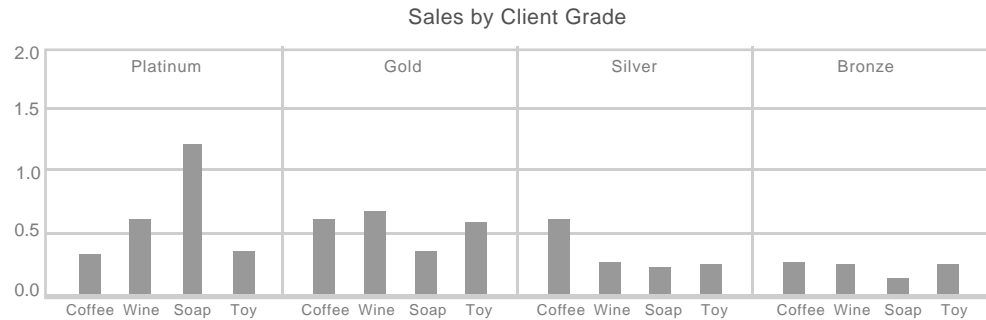
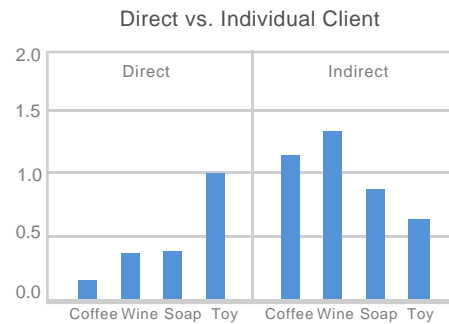
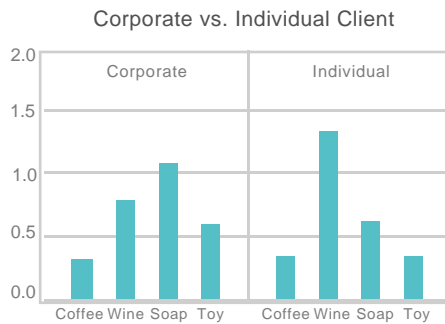
8Manage can automatically send out eSurveys to clients and automatically calculate and display client satisfaction information by country, industry, client, product and product group. The user is allowed to click on the information bar of each screen to drill down to request to view the further breakdown information. For example, the user can click on the US information bar of the Satisfaction Level by Country screen and request to view the further breakdown information by product group.



# 4. Product Information By Client Segment

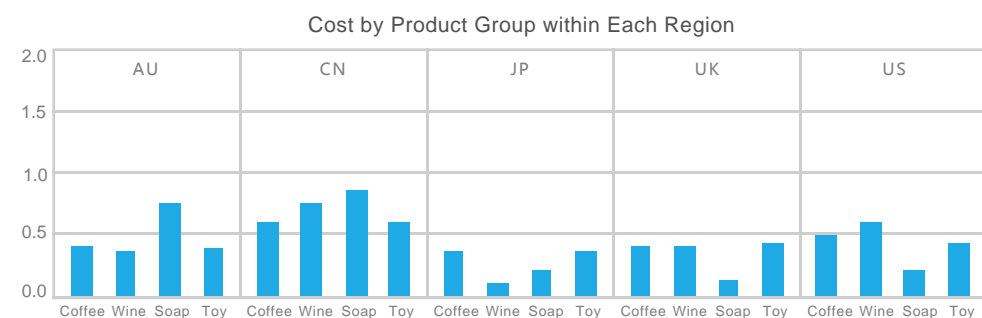
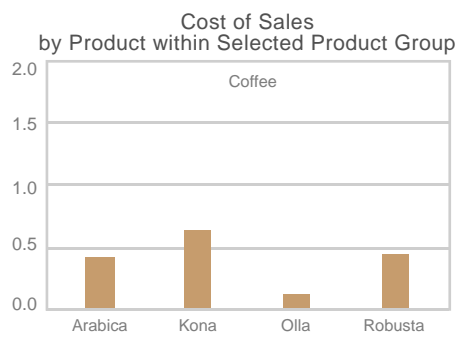
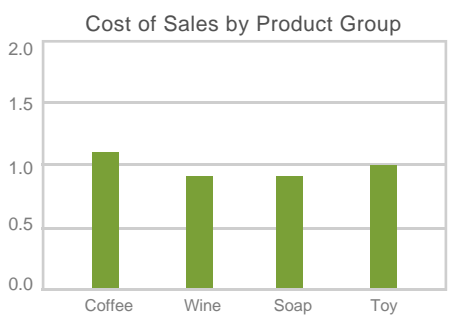
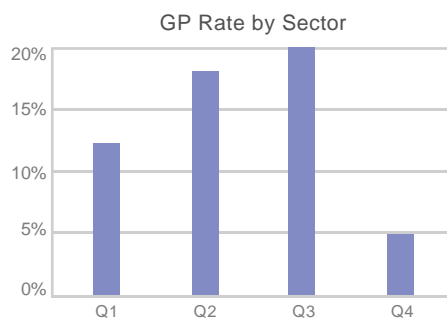
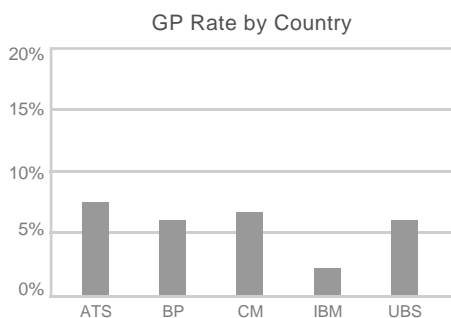
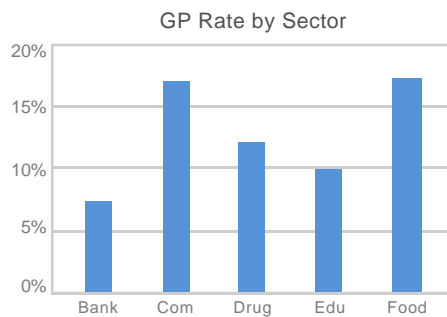
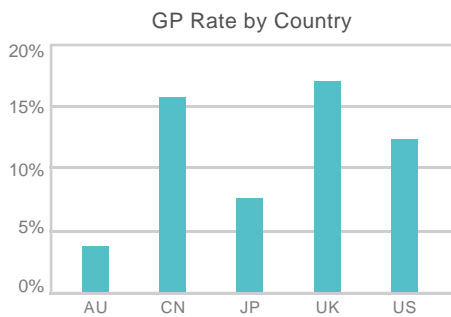
The user can request 8Manage to display real-time product sales information associated with the different client segmentations such as below:

- Corporate vs. individual clients
- Direct vs. Indirect clients
- Clients of different grades
- Clients' sales reps



# 5. Cost of Sales & Gross Profit By Region, Industry and Client

The cost of sales and gross profit information can be displayed by region , industry or client in real-time. The user is allowed to click on the information bar of each screen to drill down to see the further breakdown information. For example, the user can click on the US information bar of the GP Rate by Country screen and request to view the further breakdown information by product group or the user can click on the Coffee information bar on the GP Rate by Product Group screen and request to view the further breakdown information by coffee product.



## **8Manage BI**

[www.8manage.com](http://www.8manage.com)

Wisage Technology is an international software product company with clients in many countries and regions, including the U.S., Canada, China mainland, Hong Kong, Macau, Taiwan, Malaysia and Singapore. All its products are mobile internet ready and can be accessed with IE, Firefox, Safari and Chrome browsers and we also provide different apps on Android and iOS. It offers perpetual licenses for all regions and SaaS in certain regions only for the following products:

<b>8Manage CRM</b> : Mobile Internet CRM	<b>8Manage eExpense</b> : Web & Smartphone Expense Report System
<b>8Manage SPM</b> : Supplier & Procurement Management	<b>8Manage eLeave</b> : eLeave & Leave Management
<b>8Manage Simple PM</b> : Simple to Start & Extend PM	<b>8Manage eTimesheet</b> : Web & Smartphone Timesheet System
<b>8Manage PM</b> : Advanced Tool for Project Planning & Execution	<b>8Manage eLearning</b> : Advanced eLearning System
<b>8Manage PMO</b> : High Performance PMO	<b>8Manage eSurvey</b> : Easy-to-use eSurvey System
<b>8Manage Finance</b> : Strong Connectivity with Businesses & Operations	<b>8Manage eDMS &amp; KM</b> : eDocument & Knowledge Management
<b>8Manage HR</b> : Human Capital Management	
<b>8Manage OA</b> : New Generation Office Automation	
<b>8Manage BI</b> : Point-and-click BI	
<b>8Manage O2O</b> : B2C, B2B, eExchange, eSettlement & eERP	
<b>8Manage FAS</b> : Knowledge Enterprise Full Automation Suite	
<b>8Manage eERP2</b> : Manufacturer eERP2	

Emailing [info@wisagetechnology.com](mailto:info@wisagetechnology.com) , or calling +1-415 802 2172 or +852-81410396 .